



RatioMatic Burners

Model RM200

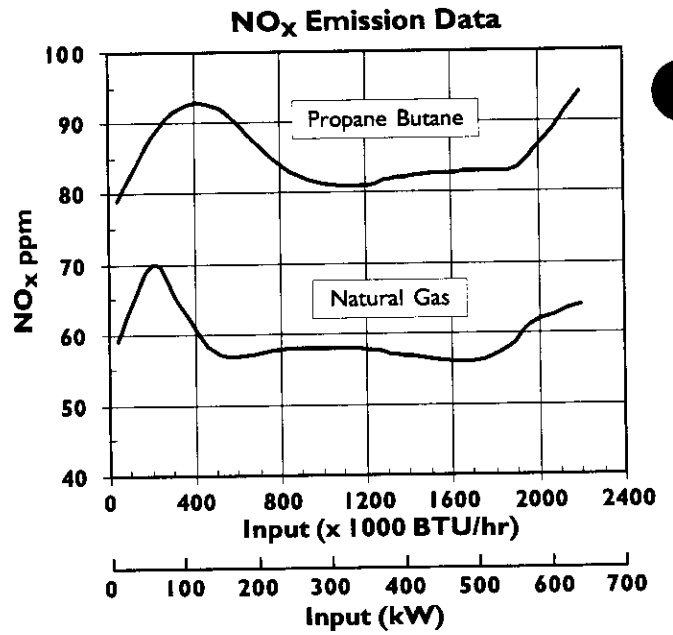
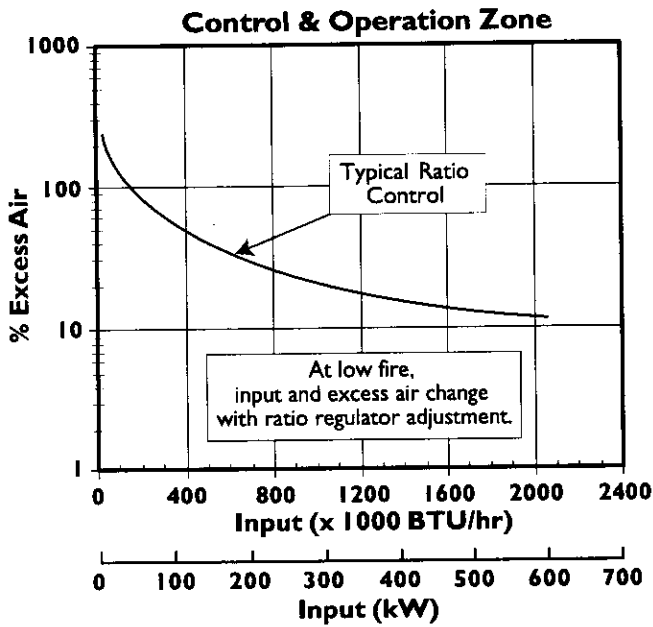
Version 3.10

Main Specifications - RM200

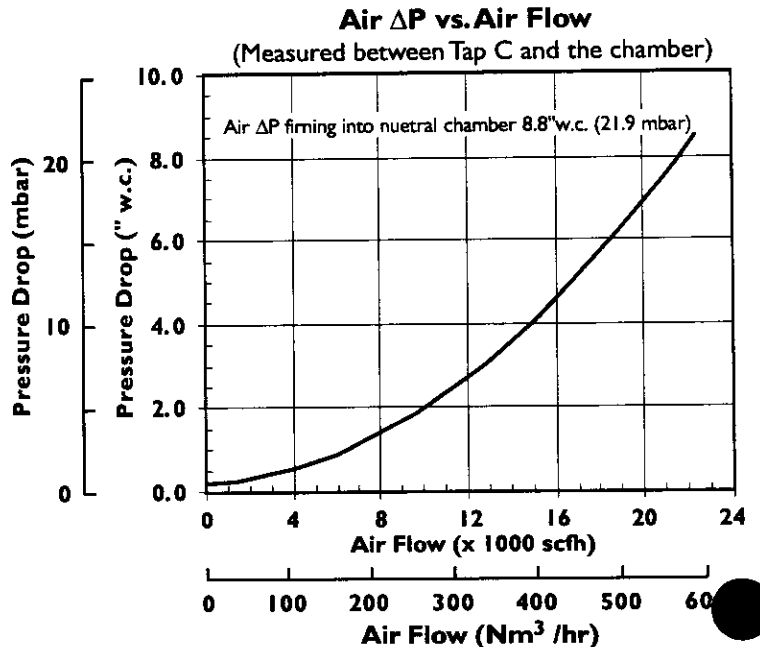
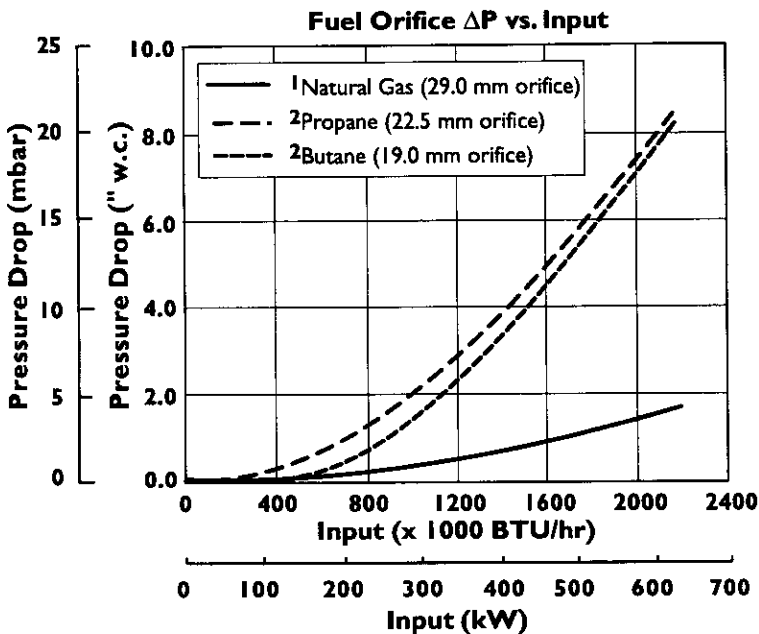
PARAMETER		SPECIFICATIONS			
		English		Metric	
		Capacity @ Chamber Pressure			
		BTU/hr	@ "w.c.	kW	@ mbar
Maximum input	60 Hz packaged blower	2,450,000	-5.0	718	-12,4
		2,350,000	-3.0	689	-7,5
		2,150,000	0.0	630	0,0
		2,050,000	1.0	601	2,5
		1,950,000	2.0	571	5,0
	50 Hz packaged blower	2,400,000	-5.0	703	-12,4
		2,300,000	-3.0	674	-7,5
		2,100,000	0.0	615	0,0
		2,000,000	1.0	586	2,5
		1,900,000	2.0	557	5,0
Note: Contact factory for varying chamber pressures or pressures outside the range: -5.0 to 2.0" w.c. (-12,4 to 5,0 mbar)					
Minimum input		BTU/hr		kW	
		40,000		12	
Main gas inlet pressure • fuel pressure at ratio regulator inlet		Natural gas Propane or Butane		15 to 55 "w.c. 15 to 30 "w.c.	
				38 to 137 mbar 38 to 75 mbar	
High fire flame length • measured from the outlet end of the combustor		Natural gas Propane or Butane		50 in 60 in	
				1300 mm 1500 mm	
Maximum chamber temperature		Alloy tube SiC tube		°F °C	
		1500 1900		815 1038	
Flame detection		Flame rod or UV scanner			
Fuel		Natural Gas, Propane or Butane. For any other mixed gas, contact Eclipse Combustion for orifice sizing			

- All information is based on laboratory testing. Different chamber size and conditions will affect the data.
- Maximum inputs are given for the standard combustion air blower without an air filter.
- All inputs based upon gross calorific values and standard conditions; 1 atmosphere, 70° F (21°C).
- Eclipse reserves the right to change the construction and/or configuration of our products at any time without being obliged to adjust earlier supplies accordingly.

Performance Graphs
RatioMatic RM200

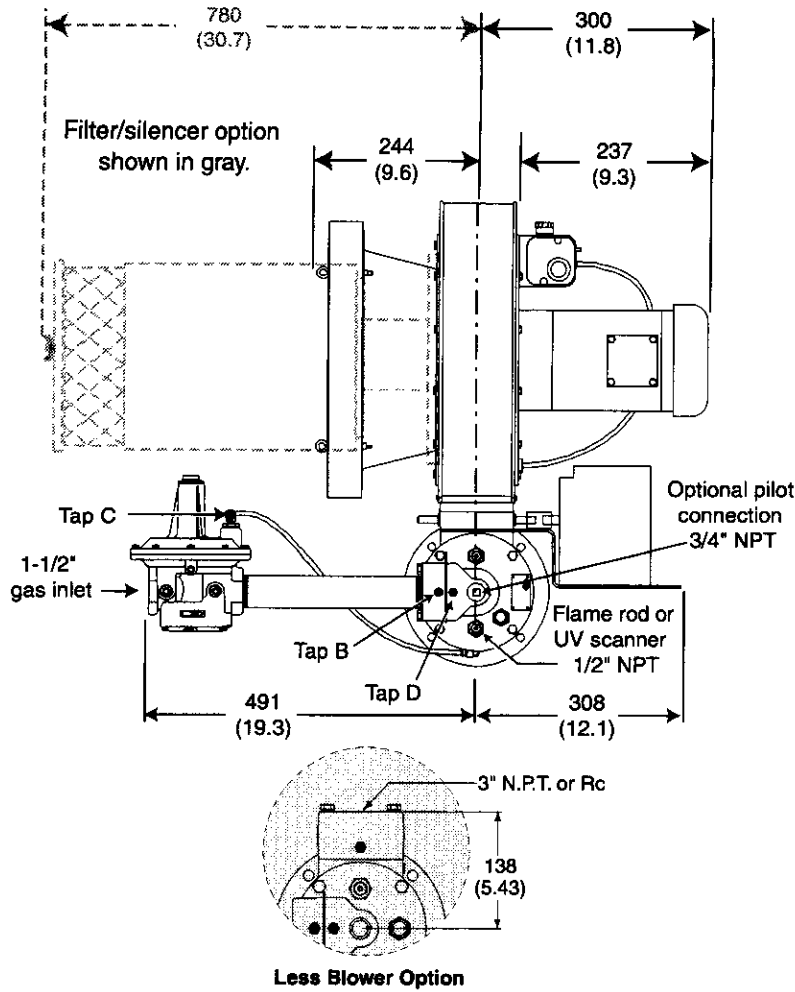


Notes on emission data	
<p>NO_x emission data is given for:</p> <ul style="list-style-type: none"> • Ambient combustion air ~70° F (20° C) • Less than 700°F (370°C) firing chamber • Minimal process air velocity • Low fire input adjusted to 40,000 BTU/hr (12kW) • ppm volume dry at 3% O₂ • Neutral chamber pressure 	<p>Emissions are influenced by:</p> <ul style="list-style-type: none"> • Chamber conditions • Fuel type • Firing rate • Ratio regulator adjustment • Combustion air temperature
<p align="center">CO emission is largely influenced by chamber conditions. Contact your local Eclipse Combustion representative for an estimate of CO emission on your application.</p>	

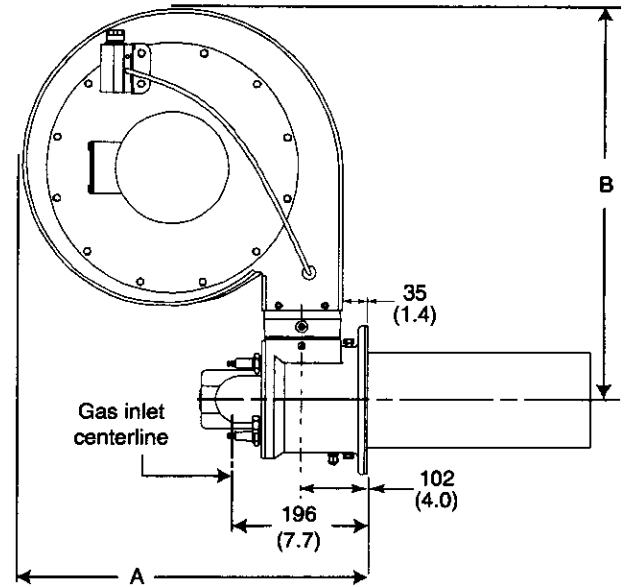


¹ Natural Gas ΔP measured between Taps B and D
² Propane and Butane ΔP measured between Tap B and the chamber

Dimensions-RM200



Dimensions in mm (in)

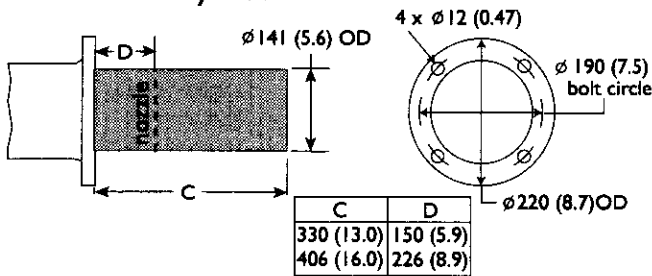


	A	B
50 Hz	575 (22.6)	650 (25.6)
60 Hz	502 (19.8)	576 (22.7)

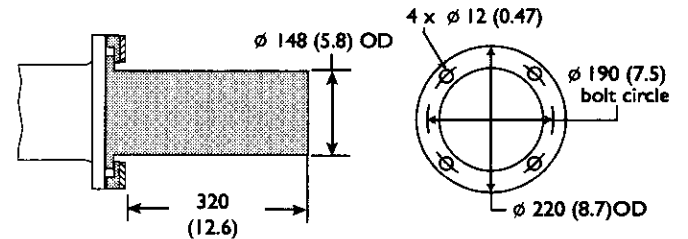
Approximate weight: 105 lb (48 kg)

Combustor types

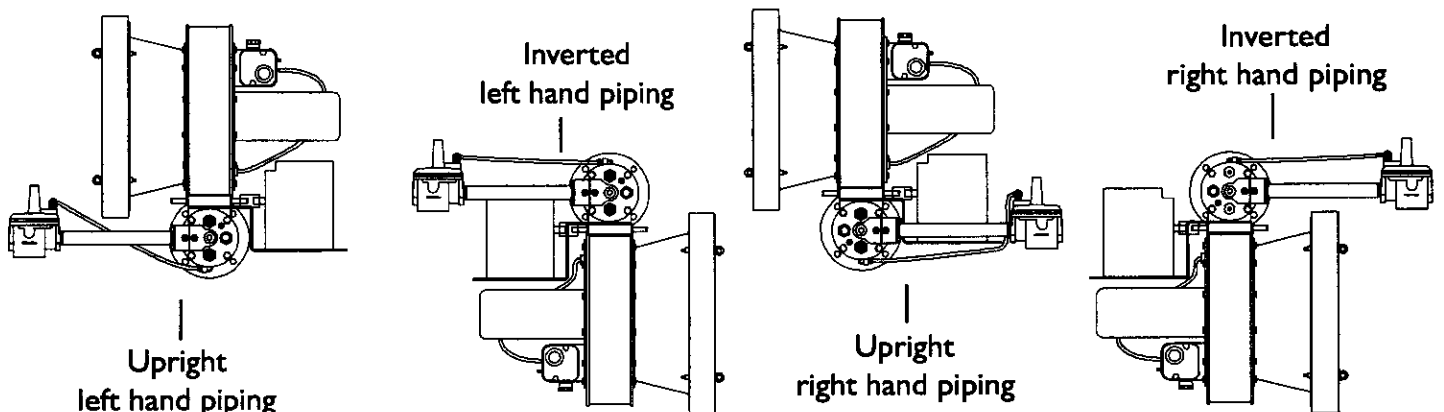
Alloy tube



SiC tube



Burner configuration





Offered By:

Power Equipment Company
2011 Williamsburg Road
Richmond, Virginia 23231
Phone (804) 236-3800
Fax (804) 236-3882

www.peconet.com